

.....

Lewis County General Hospital

Emergency Department

May 9th. 2016

To: Lewis County EMS Council Committee
LCGH Quality Council Committee

From: EMS/LCGH CQI Committee

Subject: 1st Quarter Report 2016

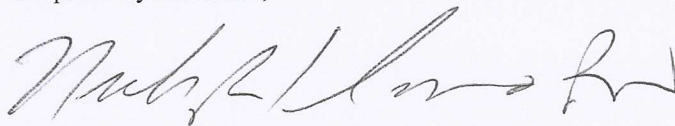
The EMS/LCGH CQI committee met in the 1st Quarter 2016 and reviewed an assortment of multi agency EMS (ALS & BLS) PCR records using the standard EMS PCR quality improvement review tool. The CQI committee reviewed 29 EMS PCR's the 1st quarter.

1st Quarter PCR's overall average compliance was 95 (see attached chart, improved from 2015). No PCR's fell below the 75% standard indicator compliance. A PCR detailed indicator compliance average shows the indicators with the most fallout on documentation (see attached chart).

of ambulance transfers into ED:
1st quarter. 283

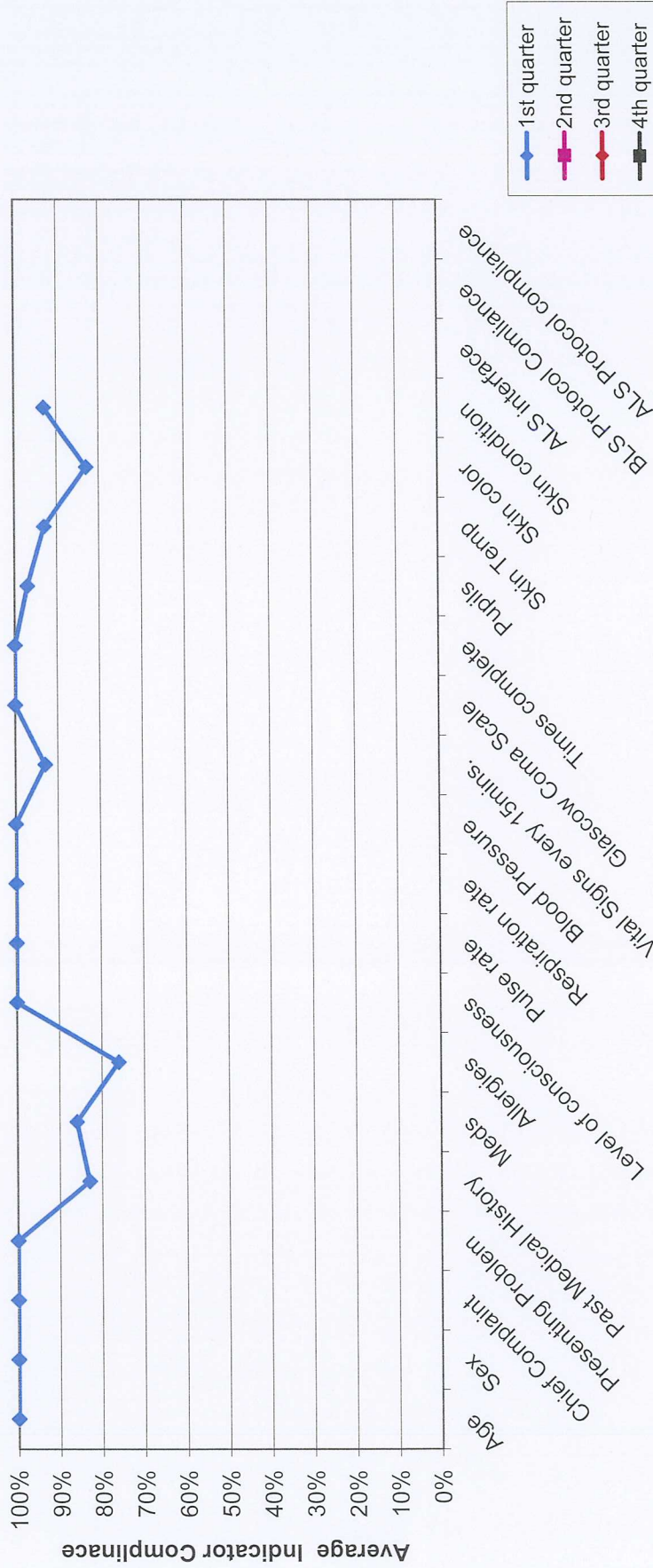
Lewis County ambulance agencies are again appreciated and commended on their continued participation and commitment towards consistent quality patient care.

Respectfully submitted,



Nicholas R. Hanno RN BSN
Emergency Department Head Nurse/Manager
Chair person of Lewis County EMS/Hospital CQI committee

Lewis County EMS/General Hospital CQI PCR CQI 2016



Compliance Indicator

Analysis:
 29 PCR's for 1st.qrt.,
 Meds, allergies & skin color with most deficiencies(improved from 2015)
Action Plan: Monitor & report quarterly to EMS and LCGH QC Councils

Prepared by:
 Nicholas R. Hanno
 DNI PCN

Lewis County EMS/General Hospital CQI PCR CQI 2016



Analysis:

29 PCR's for 1st. qrt. No PCR fall outs.

Action Plan: Monitor and report quarterly to EMS and LCGH Quality Councils

Prepared by:
Nicholas R. Hanno